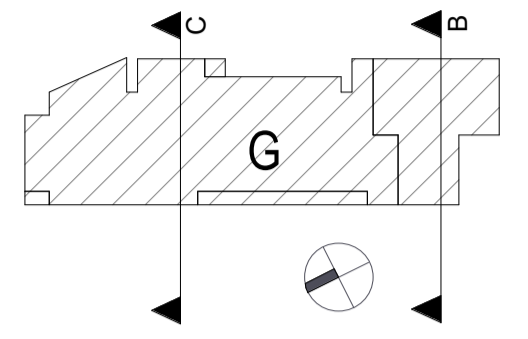


# DESIGN INTENT DRAWING



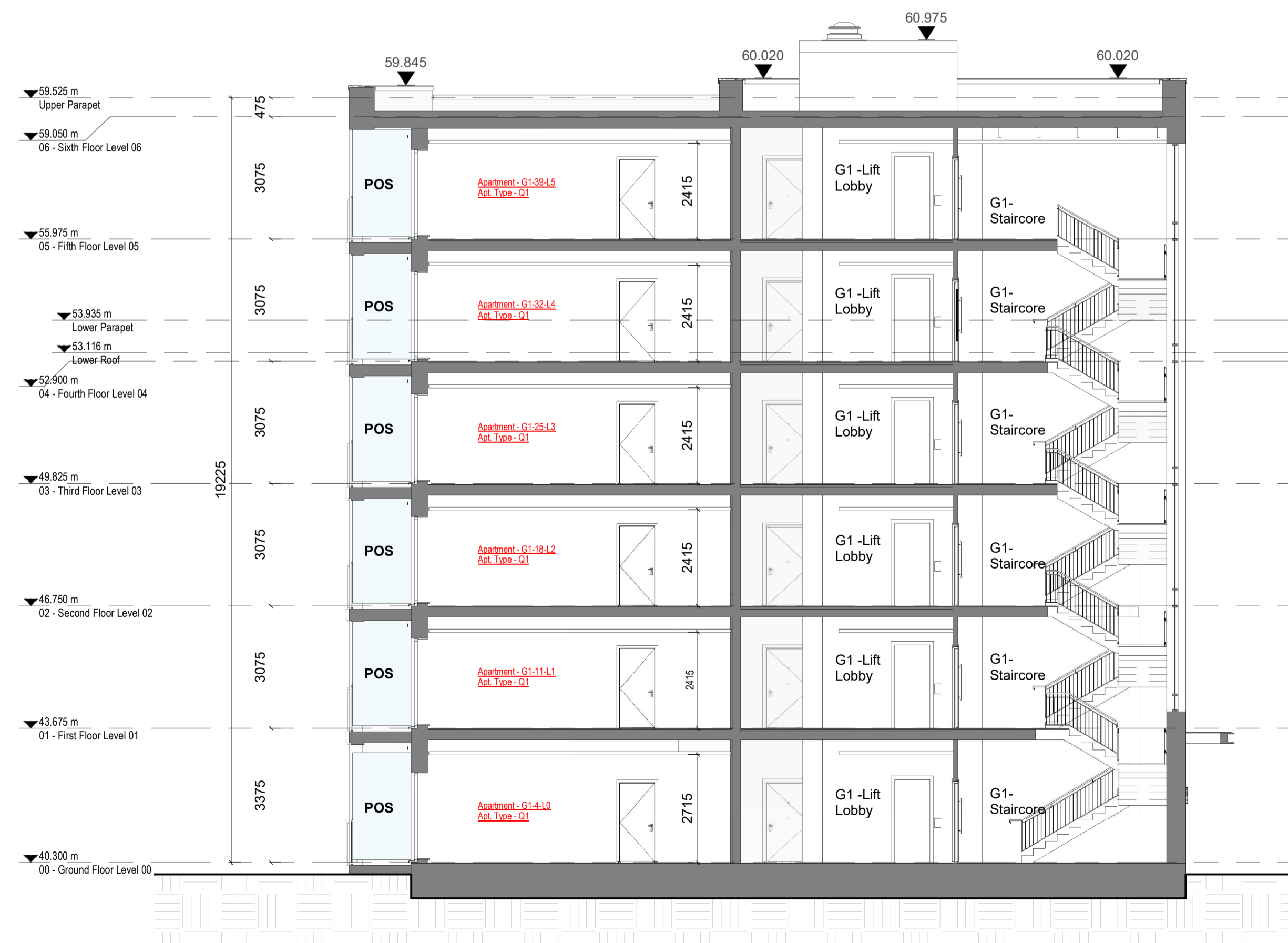
Block G key Plan

## Room Legend

EH/C	Entrance Hall / Corridor
KLD	Kitchen / Living / Dining Room
BD1	Bedroom 1
BD2	Bedroom 2
BD3	Bedroom 3
BR	Bathroom
BR/ES	Bathroom / En Suite
ES	En Suite
ST	Store
POS	Private Open Space
ER	Electrical Riser
MR	Mechanical Riser
MSV	Mechanical Smoke Vent



1 GA - Section BB  
1 : 100



2 GA - Section CC  
1 : 100

Rev	Description	Date	Dr by	App by
Project Stage				

# PLANNING

Client:  
Eastwise Construction Swords Limited

Project:  
Hartfield Place  
Swords Road, Whitehall, Dublin 9  
D09 C7F8

Drawing Title:  
BLOCK G - Section BB and CC GA - 472 Units

Drawn	Checked	Paper Size	Scale	Date
DP	CM	A1	As indicated	Mar. 2022

Project No.	Drawing No.	Classification	Revision
HARTPL	072531		

File Name:  
HARTPL-CWO-BG-ZZ-DR-A-072531

Status:  
S2-Suitable For Information



No.1 Sarsfield Quay, Dublin 7, D07 R9FH  
t: 01 518 0170 e: admin@cwoarchitects.ie  
Dublin | Cork | Galway | London | UK & Europe +  
www.cwoarchitects.ie